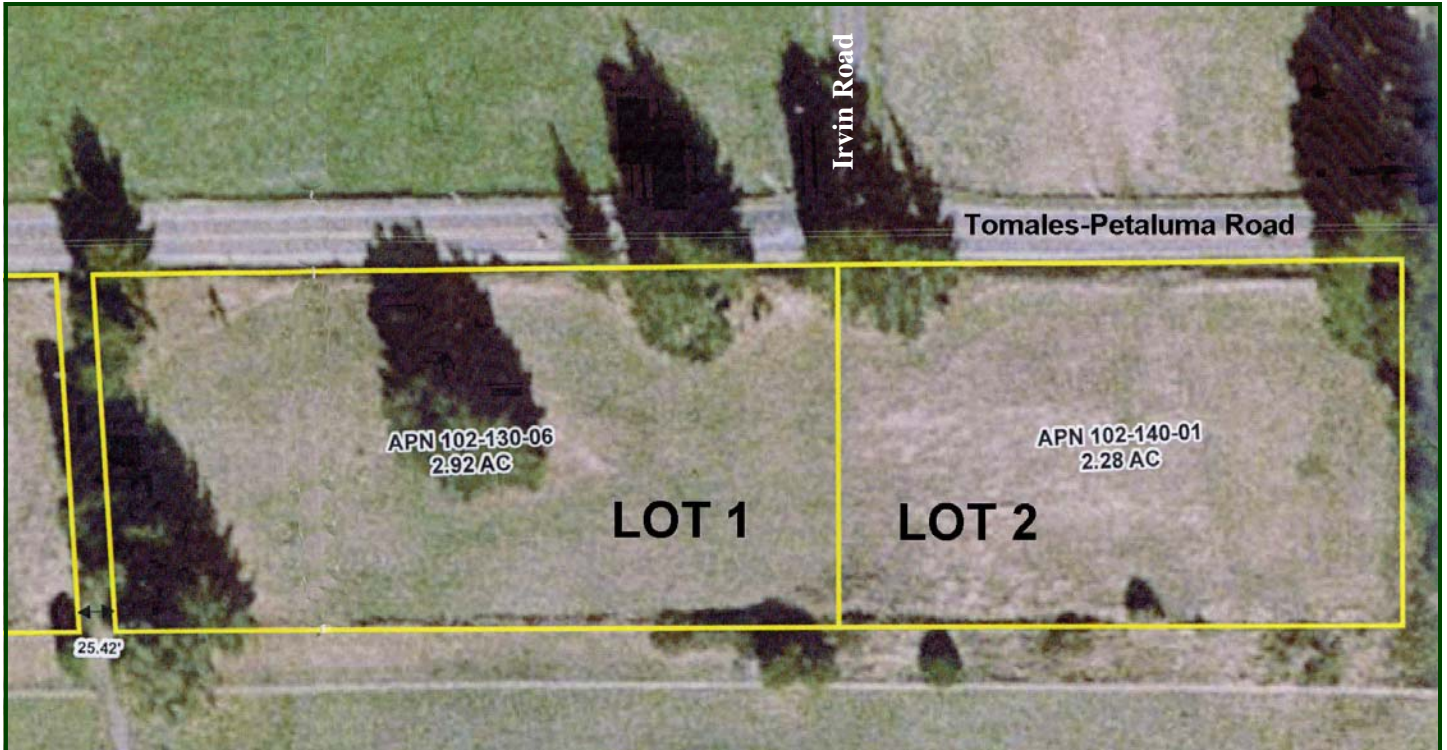


COUNTRY PROPERTY FOR SALE

Two Parcels on Tomales-Petaluma Road



⇒ **Parcel 1 - Approximately 2.92 Acres \$525,000**

⇒ **Parcel 2 - Approximately 2.28 Acres \$525,000**

⇒ **Level to Gently Sloping Topography**

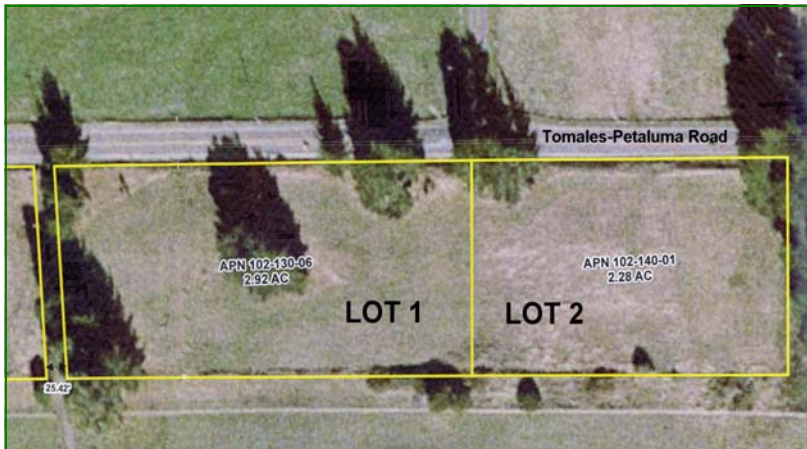
⇒ **Contact Scott T. Murphy for Details**

Scott T. Murphy

707 763-1400 x5

Leading Edge Properties

The information herein was obtained from third parties and has not been independently verified by the real estate broker. Buyers should have experts inspect the property and verify all information. Real estate brokers are not qualified to advise as to legal, tax, survey, soils-drainage or other such matters.



The information herein was obtained from third parties and has not been independently verified by the real estate broker. Buyers should have experts inspect the property and verify all information. Real estate brokers are not qualified to advise as to legal, tax, survey, soils-drainage or other such matters.